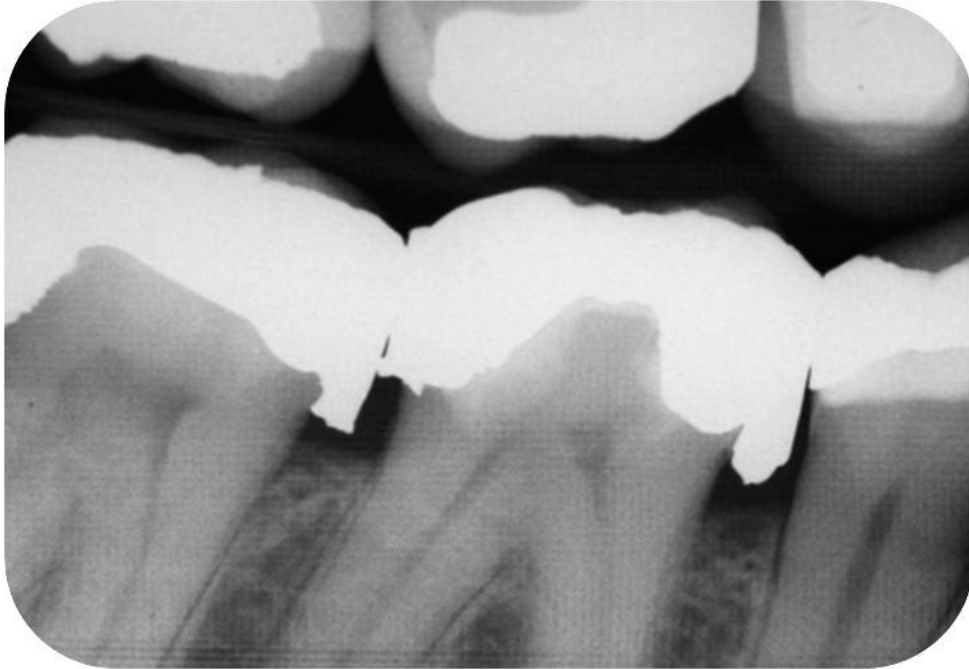


Important Error or Diagnosis: Knowing the consequences of the overhangs on #30 and #31



Q1. What caused the overhang on the mesial of tooth # 30 and tooth # 31?

- a. Poor selection of the restorative materials.
- b. Failure to check the occlusion after the restoration was placed.
- c. **Failure to use a matrix retained and wedge.**
- d. All of the choices are correct.

Q2. What are the consequences of having restorations like this on teeth # 30 and # 31?

- a. Recurrent caries.
- b. Periodontal disease
- c. Bone loss
- d. **All of the choices are correct.**

Kenneth L Allen, DDS, MBA
Clinical Associate Professor and Associate Chair
Dept. of Cariology and Comprehensive Care

Q1. What caused the overhang on the mesial of tooth # 30 and tooth # 31?

- a. Poor selection of the restorative materials.
- b. Failure to check the occlusion after the restoration was placed.
- c. **Failure to use a matrix retained and wedge.**
- d. All of the choices are correct.

Q2. What are the consequences of having restorations like this on teeth # 30 and # 31?

- a. Recurrent caries.
- b. Periodontal disease
- c. Bone loss
- d. **All of the choices are correct.**